

RECORDED **FEB 23 1972** AT 11:05 O'CLOCK A.M

RECEPTION NO. _____ JOHN B. HUISMAN, Recorder

CERTIFIED LAND CORNER RECORDATION

DESCRIPTION OF CORNER EVIDENCE FOUND, AND ORIGINAL RECORD (If known)

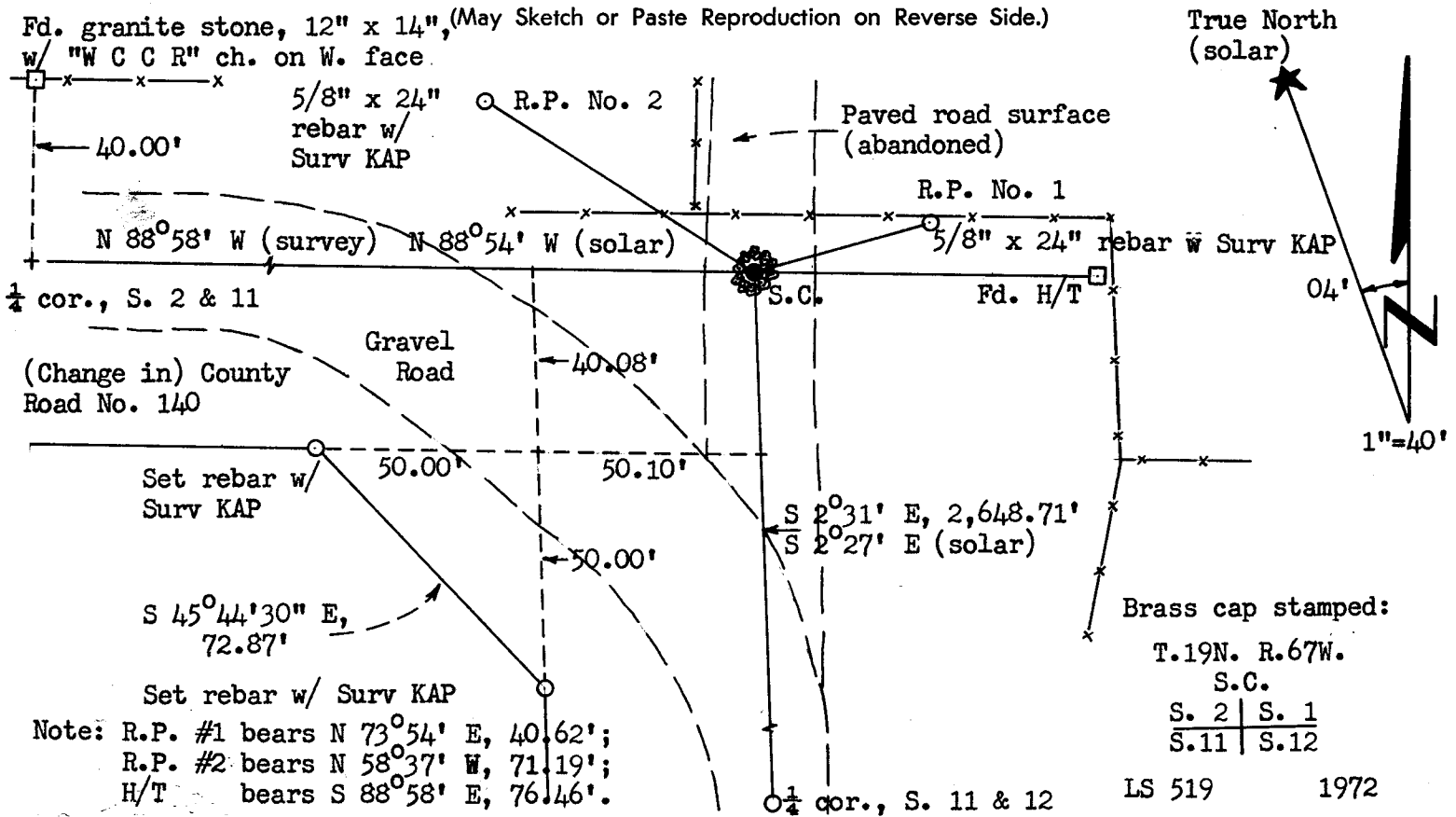
LOCATION
 S. 2 | S. 1
 S. 11 | S. 12
 T. 19N., R. 67W.
 6th P.M.

1. No monument found in position (obliterated corner).
2. Found portion of record stone w/ grooves and granite stone 12" x 12" x 18" with "W C C R" chiseled on face floating in borrow pit, 200 feet downslope.
3. G.L.O. record, "Set a granite 12 x 10 x 10 for Cor to Sections 1, 2, 11, 12". (Contract survey by Alfred M. Rogers)

DESCRIPTION OF MONUMENT AND ACCESSORIES ESTABLISHED TO PERPETUATE THE ORIGINAL LOCATION OF THIS CORNER: 40.0 feet south

1. Corner position determined at point of intersection of north R/W fence of (Change in) County Road No. 140 and mid-point of R/W fences along old Yellowstone Highway at a point 295 feet south of corner. Distance between fences = 100.0 feet.
2. Set a 1 1/2" dia. x 30" long galv. iron pipe with brass cap, 12" above paved surface. Raised an earth filled rock mound around corner monument.

SKETCH, WITH COURSE AND DISTANCE TO ADJACENT CORNER IF DETERMINED IN THIS SURVEY.



I, R.L. Hudson certify that I have carefully performed or reviewed the work done on the diagrammed corner as reported on this recordation form and approve the same.

R.L. Hudson
 Signature of Surveyor

Wyoming L.S. No. 519
 Registration No.

STATE OF WYOMING,
 Office of Clerk and Recorder,
 County of Laramie

This "corner record" was filed for record on the 23rd day of February, 1972, was noted on the cross-index plat and is assigned page No. 19-67, in book No. ONE

John B. Huisman
 County Official

Cross Index No. _____	T. _____	R. _____	Mer. _____
_____	T. _____	R. _____	Mer. _____
_____	T. _____	R. _____	Mer. _____
_____	T. _____	R. _____	Mer. _____
_____	T. _____	R. _____	Mer. _____
_____	T. _____	R. _____	Mer. _____
_____	T. _____	R. _____	Mer. _____

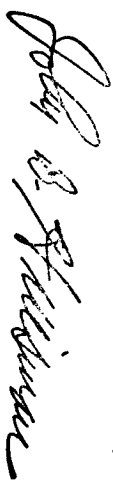
Photographed.....

Indexed.....

Posted.....

The State of Wyoming }
County of Laramie } SS

This instrument was filed for record
at 11:05 o'clock A. M. on the
23 day of Feb
A. D. 19 22 and duly recorded in
Book on page



County Clerk & Ex-Officio Register of Deeds
by _____ Deputy